

K.U.K. COMMON ARMY (GERMAN REGIMENT) FROM 1908

THE MAIN DIFFERENCE IN THE UNIFORMS BETWEEN HUNGARIAN AND GERMAN REGIMENTS WERE THE DIFFERENT TROUSERS. GERMAN REGIMENTS WORE THE LONG, STRAIGHT CUT PANTALOONS INSTEAD OF THE TIGHT CUT HUNGARIAN TROUSERS WHAT WERE USED ONLY BY HUNGARIAN RECRUITED REGIMENTS (SEE PAINTING GUIDE OF V75010)

FROM 1908 THE DARK BLUE UNIFORMS WERE CHANGED TO PIKE GREY AND FROM 1909 THE BLACKENED LEATHER EQUIPMENTS WERE CHANGED TO NATURAL LEATHER.

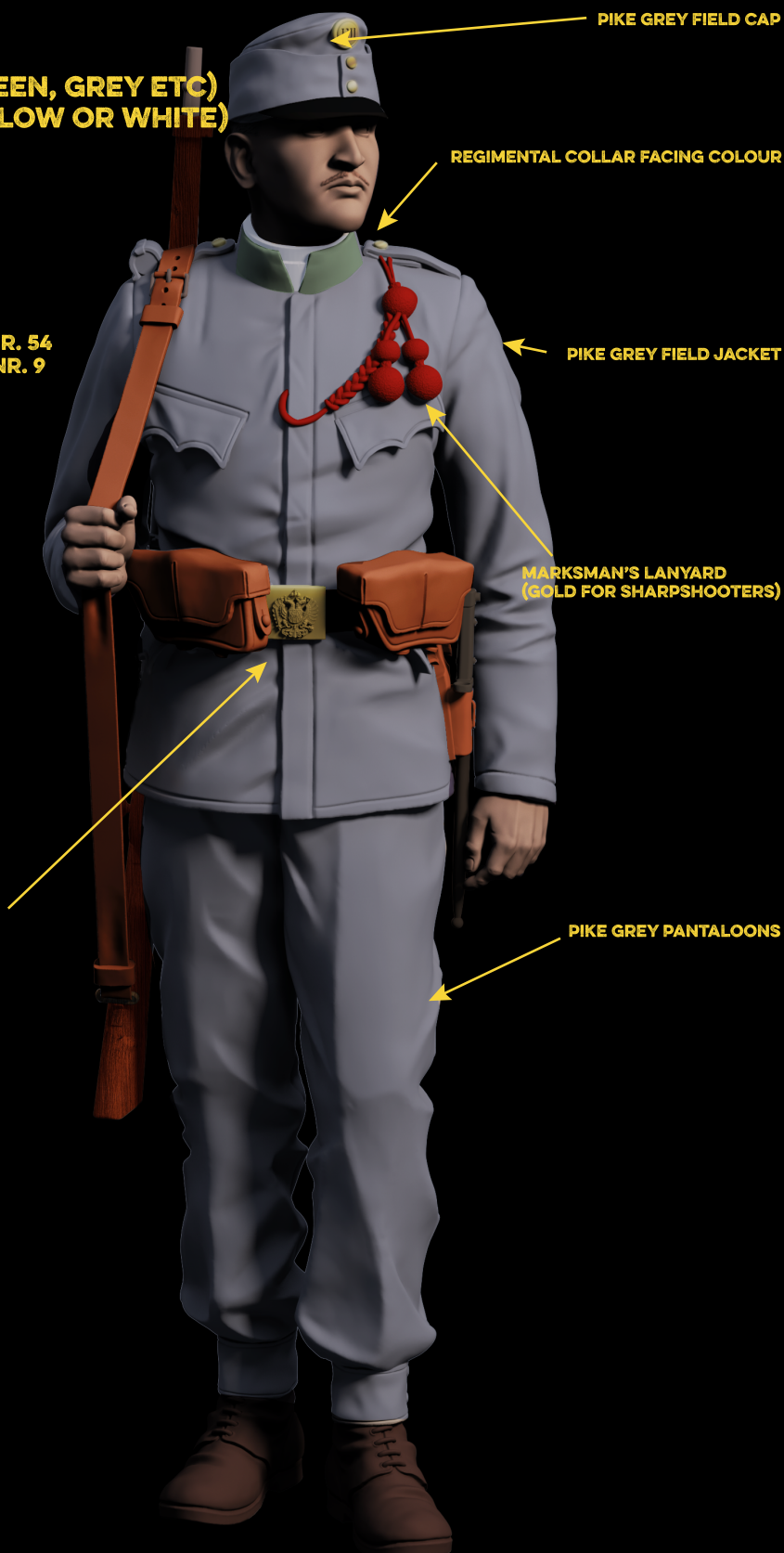
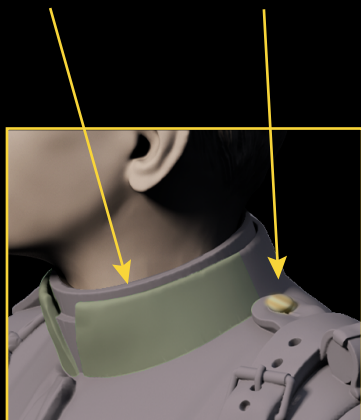
A REGIMENT CAN BE RECOGNIZED BY:

- COLOUR OF THE COLLAR (BLUE, RED, GREEN, GREY ETC)
- AND THE COLOUR OF THE BUTTONS (YELLOW OR WHITE)

ALMOST EVERY COLOUR WAS USED BY 2 REGIMENTS WITH DIFFERENT BUTTON COLOUR

FOR EXAMPLE:

APPLE GREEN COLLAR + WHITE (SILVER) BUTTONS = IR NR. 54
APPLE GREEN COLLAR + YELLOW (GOLD) BUTTONS = IR NR. 9



PIKE GREY FIELD CAP

REGIMENTAL COLLAR FACING COLOUR

PIKE GREY FIELD JACKET

MARKSMAN'S LANYARD
(GOLD FOR SHARPSHOOTERS)

BELT BUCKLE WITH THE IMPERIAL EAGLE

PIKE GREY PANTALOONS